



About LTE Fault

Low Evaporator Temperature

There is evaporator unit on the inside of the air conditioner. It occurs when the evaporator cools down and is a safety / warning message that cleaning is required.

There is a sensor -SB3- that measures temperature of the evaporator unit. This message occurs if the evaporator unit goes below 3 °C, and the compressor (cooling) stops.

Reasons

- A)** The evaporator fan may be faulty.
- B)** The evaporator unit may be filled with dust / dirty.

Things to Do

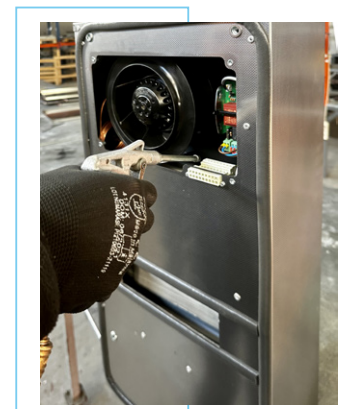
As long as there is power in the device - regardless of the temperature - the evaporator fan on the inside runs. If this fan is not spinning, the cold in the Evaporator cannot be released.

A)

If the evaporator fan does not run when the A/C is on power, the fan might be malfunctioning. Check the cables and the green sockets right next to the fan.

B)

If the fan spins when the device is on power, the evaporator unit that is under the fan is full of dust/dirt and not enough air is passing through. Clean the evaporator unit by pressurized air or suitable chemicals.



EVAPORATOR MAINTENANCE

LTE / ER3

When the EVAPORATOR inside the A/C is filled with dust, not enough air can pass through and the evaporator cools down too much. This message prevents of evaporator frost. **Clean the evaporator thoroughly.**

1. Turn Off

The A/C



2. Unscrew

The bolts of cover.



3. Remove

The fan cover.



4. Check

The green connectors.



5. Clean thoroughly

The Evaporator Unit.



6. Be sure to clean

And Turn On.

